

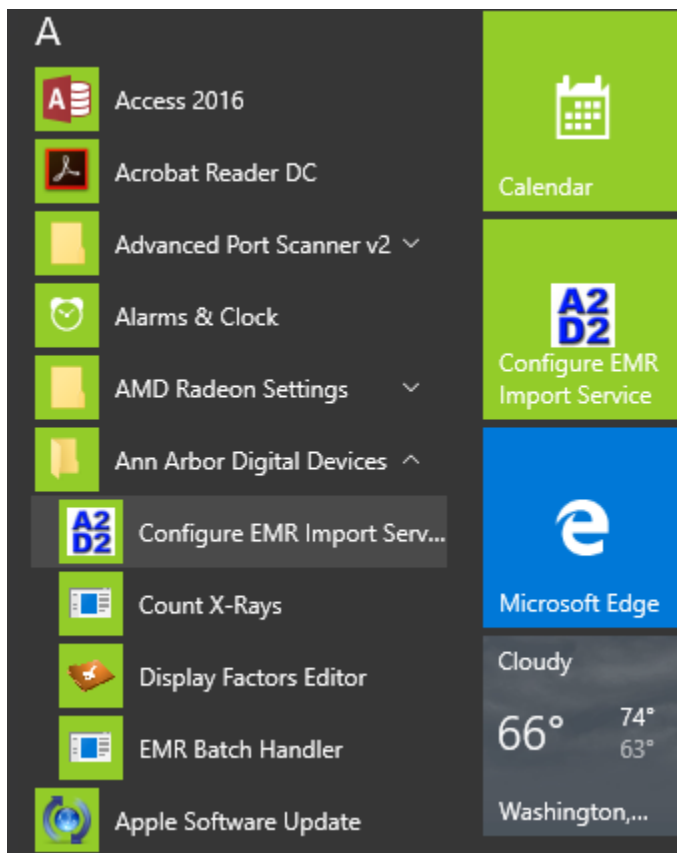
EMR Import Service Version 4.6.0.50

http://www.mediafire.com/download/qgroravpk6q5977/EMRImportServiceSetup_46.msi

This installs as a 'Windows Service'. After installation you will need to configure the options for importing like the following:

Programs (Apps) → Ann Arbor Digital Devices → Configure EMR Import Service

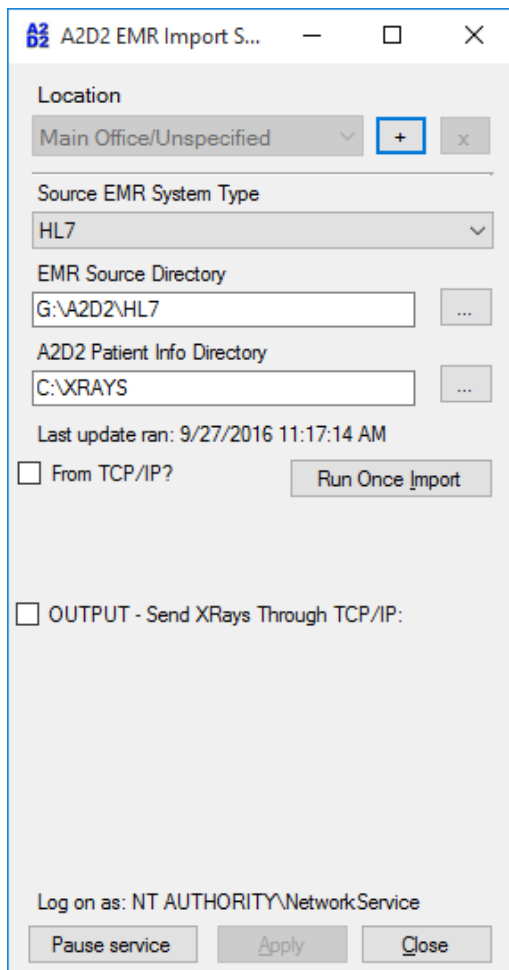
(Windows 10 Example View)



Next a screen will appear, allowing you to choose a Source EMR System Type, a Source Directory, and a Patient-Info Directory.

- 1) The Source EMR Type
 - a. TRAKnet – CCD files
 - b. Sammy - .txt files
 - c. HL7 - .hl7 files
- 2) EMR Source Directory
 - a. This directory needs to correspond to a 'place' on that physical computer that the 'Interface' company will be putting the files such as a '.hl7'.

- b. Note: This version of the software will not work with UNC folders. Like [\\NETWORKDrive\hello](#)
 - c. Even mapped drives to networked locations often do not work. The Service User does not have access. There is another version of this software that is designed for that. Also see below for passing data through a TCP/IP or a VPN with this version.
- 3) A2D2 Patient Info Directory
- a. This is the directory that matches the 'Patient' directory in the main A2D2 application.
 - b. As stated: Do not use a UNC folder or a mapped network drive in this version.
- 4) When making changes, make sure you Click 'Apply'.
- 5) You can test with the 'Run Once' buttons, but the 'Start/Continue' service is what will cause the service to run every 3 minutes.



In the above case the patient directory is C:\XRAYS which is the normal default directory location. The EMR interface company in this case is dropping HL7 files when a patient comes through to 'G:\A2D2\HL7'. The 'Service' checks every 3 minutes for new files. (Just examples...)

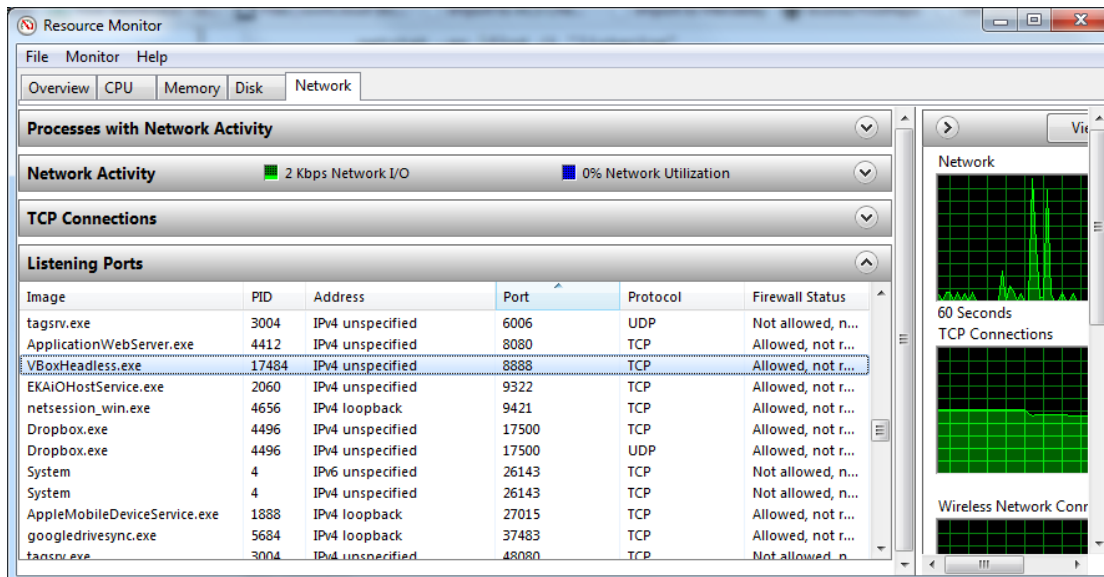
ADVANCED OPTIONS

This service can be configured to receive data through TCP/IP. Check the box 'From TCP/IP'. Then put a port#. Remember to 'Click Apply'. It will attempt to open the Port. A few EMR companies are now using this method of delivery. However, you must also make sure the Firewall is not blocking the A2D2 application.

From TCP/IP? Run Once Import

Port (For Import) RUNNING

One way to check is: On the machine go to run 'resmon.exe' Click on 'Listening Ports', then find the port# that you assigned to A2D2. If it says 'Not Allowed' then we need to make an exception in the firewall. See <http://www.howtogeek.com/112564/how-to-create-advanced-firewall-rules-in-the-windows-firewall/>

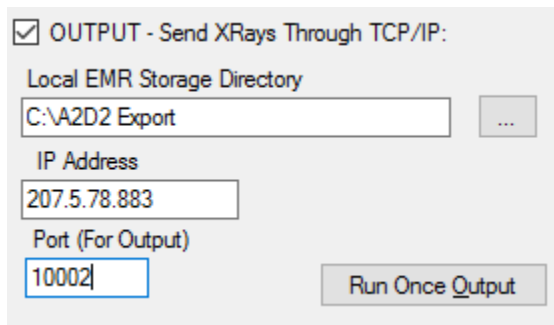


The 'From TCP/IP' is unaffected by the 3-minute timer. It should respond relatively immediately when the sender machine/interface sends data through to the port, and the gateway is open.

After the data is received: The data is received, interpreted based on the contents, and placed into the 'EMR Source Directory'. We do not receive the original 'real file name', but base the new file name on the contents within. Some TCP/IP EMR interface companies have used the file-header of a certain length to determine the content. However, this A2D2 Interface system expects the file to begin immediately... Meaning if the file begins with 'MSH|....' and so on, it will mark the file as '.hl7'. If the file appears to look like a 'Sammy' '.txt'. file it will mark it like so. After it places the file in the 'EMR Source Directory', there it awaits processing by that import engine, to the 'Patient' Directory, which is on a 3-minute timer.

Moving Image data back out through with TCP/IP

This software has the capability to move the image data back through to the interface. You just need to give it a 'Local EMR Storage Directory'. This is just a way station, so to speak. A temporary place to store stuff like '.hl7's on the local machine before it moves it through to the TCP/IP location. However, this directory should match the same directory you have set-up for the export directory location in the Main A2D2 application.



OUTPUT - Send XRays Through TCP/IP:

Local EMR Storage Directory
C:\A2D2 Export ...

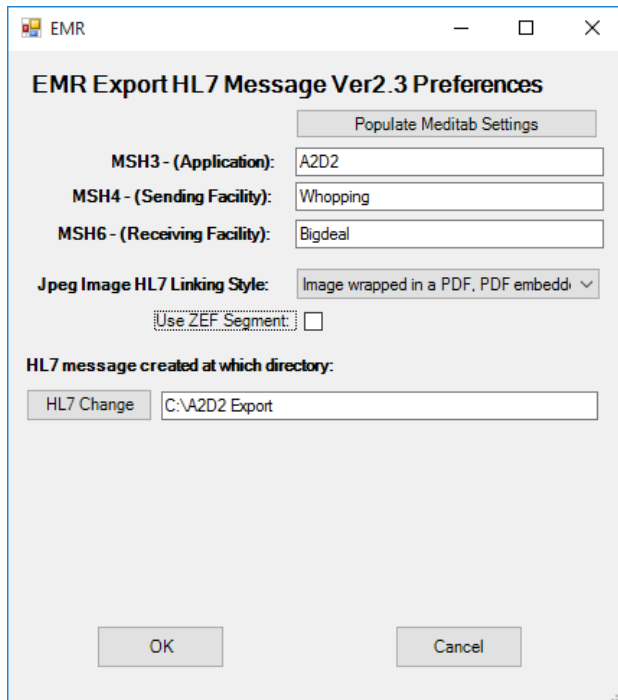
IP Address
207.5.78.883

Port (For Output)
10002

Run Once Output

Just as above you need to make sure that any firewalls are not blocking the 'Output' port. In this case you will see a 'VPN' directory created inside of the 'Storage Directory' after they are processed. It is an 'Archive' directory only and can normally be ignored. If you wanted to reprocess a file for some reason, you could move a file back from the 'VPN' directory to the 'Storage Directory'.

How are files created for export? If you have the regular A2D2 application configured correctly. Then it will keep dumping files into that folder as they are created. See the image, notice the HL7 directory matches the 'Storage Directory' above.



EMR

EMR Export HL7 Message Ver2.3 Preferences

Populate Meditab Settings

MSH3 - (Application): A2D2

MSH4 - (Sending Facility): Whopping

MSH6 - (Receiving Facility): Bigdeal

Jpeg Image HL7 Linking Style: Image wrapped in a PDF, PDF embedd

Use ZEF Segment:

HL7 message created at which directory:

HL7 Change C:\A2D2 Export

OK Cancel

This Export section also runs on the 3-Minute cycle like the regular import process.

Appendix

Where do the files go?

In the regular importing process, files come in, and disappear. Where do they go? If you ever have trouble and need to reimport some files. They go to the ProgramData directory. Usually here: <C:\ProgramData\A2D2EMRIImport\Results\main> Then under there you'll find an ERROR and PROCESSED directories. These are all hidden directories, so you'll have to enable system directories.

Where will Errors be broadcast?

See the 'Event Viewer' in Windows. Very helpful to tell you what is going on with missing directories or port failures. Remember the 'Configure tool' isn't actually the running application.

What is the Location 'Main/Office' at the top?

If you wanted to run more than one instance on one machine at one time. Here we have gotten really advanced. You can then control two or more different options with more than one service at once. In general, you should not have to touch this option.