



Ann Arbor Digital Devices, Inc.

19720 Cavanaugh Lake Rd.

Chelsea, MI 48118

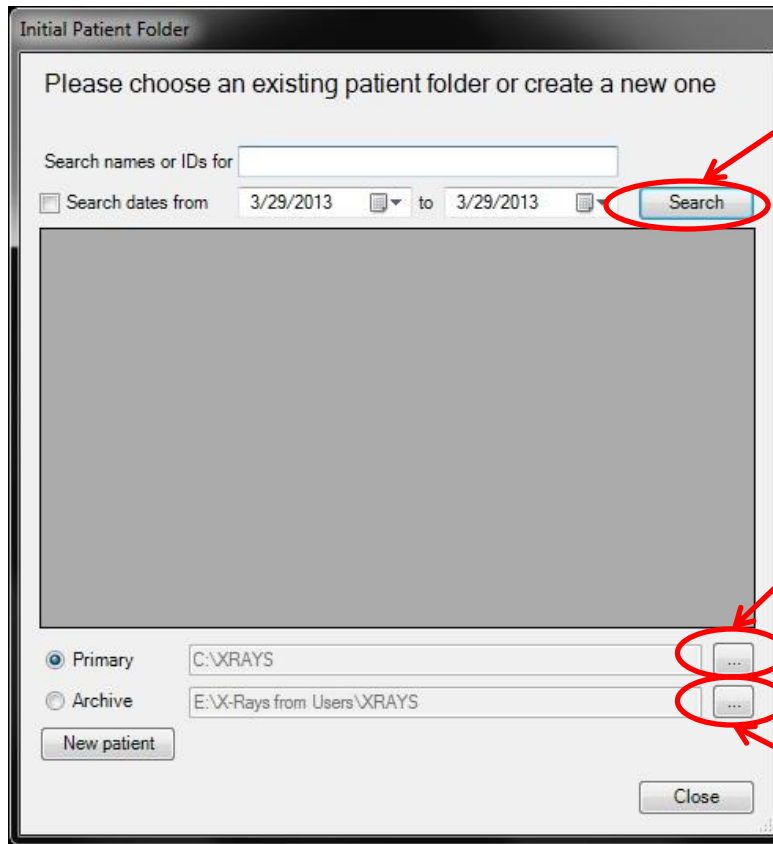
(734) 730-2232 Fax (734) 475-3114

www.a2d2xray.com

a2d2help@gmail.com

Changing the A2D2 Default Directory

Here is the initial start up window for the newest A2D2 software

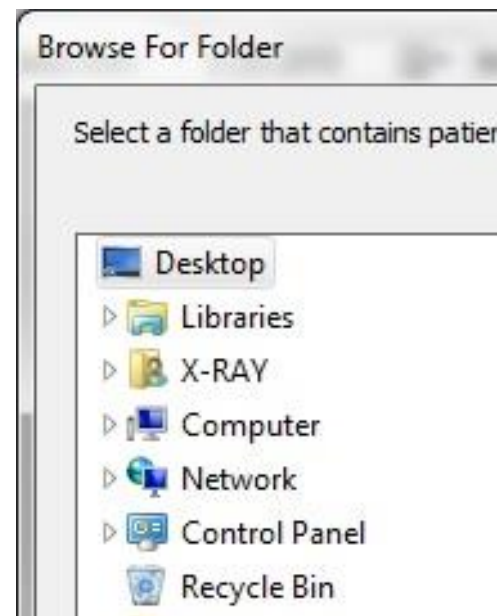


This window will be blank unless the “Search” button is clicked (with or without a search term)

Click on this button to change the default directory

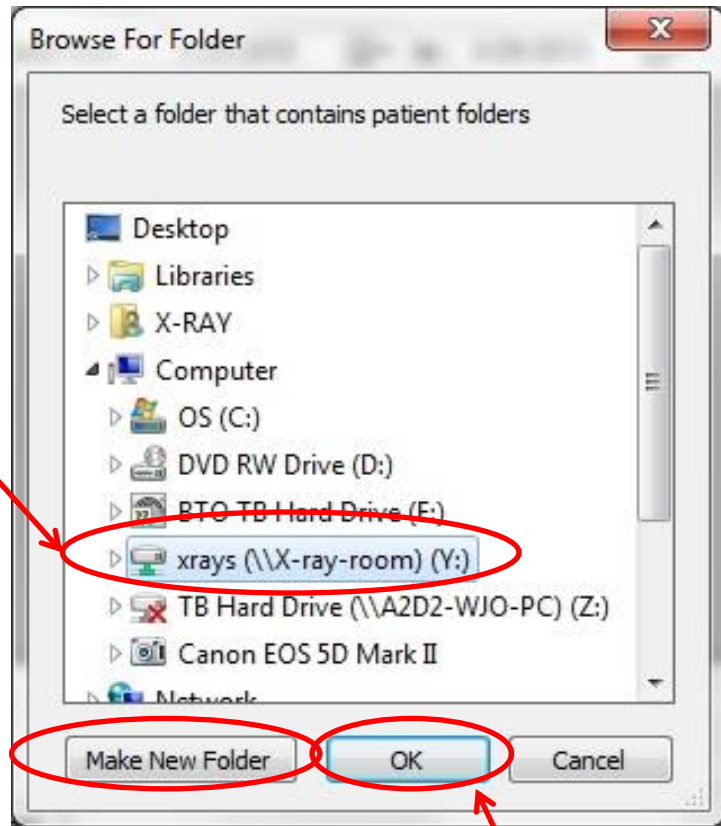
Click on this button to change the Archive directory

A “Browse For Folder” window will open up which will allow you to navigate to a folder elsewhere on the computer, an attached external hard drive, a folder on a mapped drive or a folder on the network. No matter where the folder is located it must be named “XRAYS”



Single click on the “XRAYs” folder on the new default drive to highlight it

(If the new drive doesn’t have an XRAYs folder click on “Make New Folder” and create one)



Once the “XRAYs” folder is highlighted click on “OK”

Now when the A2D2 software is started up the patient folders from the new drive will appear in the window and the default drive will appear subdued



In this example the Primary drive is set to a network location and the Archive drive is set to a mapped drive. Note how the mapped drive only lists the drive letter even though the software is directed to the “XRAYs” folder on a separate computer.

If you have any questions or concerns please feel free to contact A2D2 at a2d2xray@gmail.com or call the office at 734-730-2232. If it is necessary for A2D2 to help with the installation a Go to Meeting can be set up for a charge of \$125.00 per hour with a one hour minimum. Payment is due via credit card at time of service.