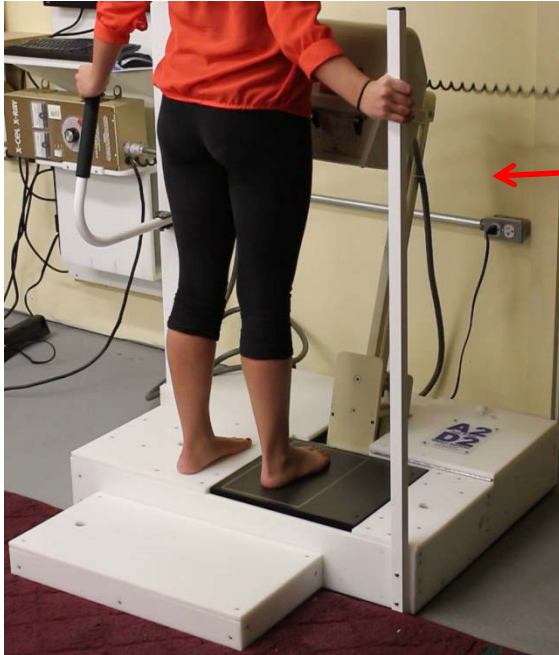


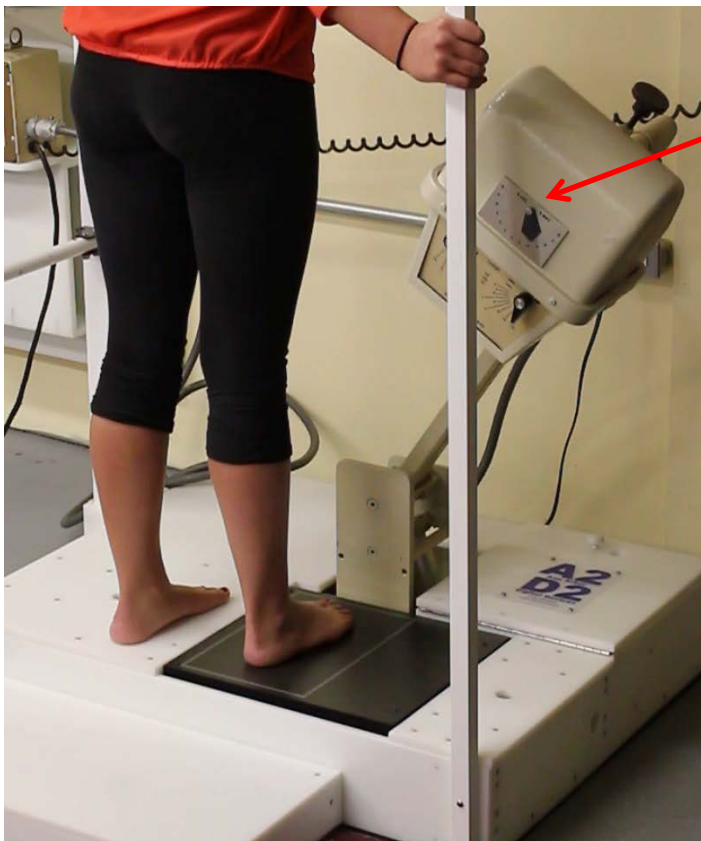
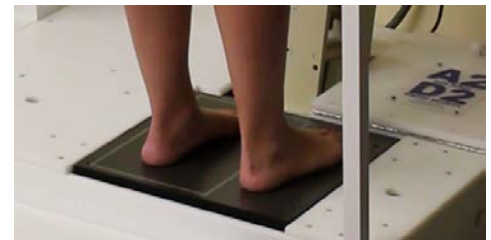
### Model 128s Patient Positioning



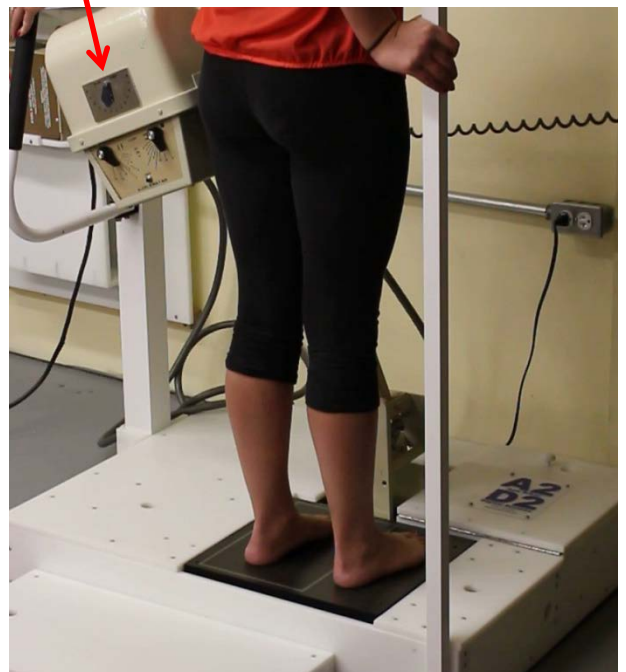
Proper position of patient and X-Cel unit for DP (AP) view. X-Cel unit at 15 degree angle.

Right Foot

Left Foot



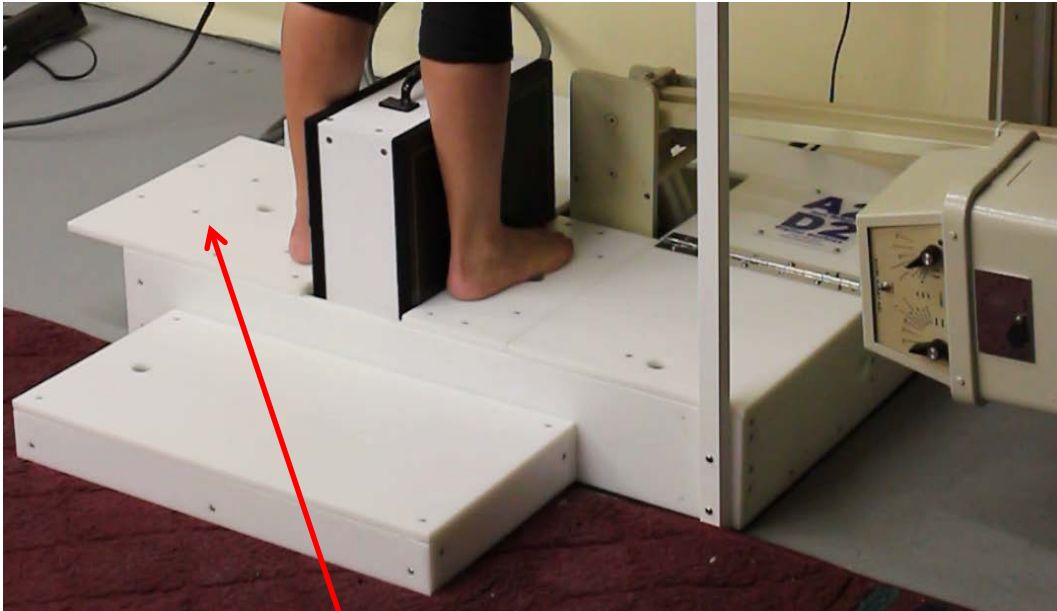
Rear view showing 30 degree oblique view of right foot. Opposite rotation for left foot.



4 views can be taken with only moving the head and having the patient take one step sideways

### Model 128s Patient Positioning

---



Lateral view/position  
for right foot

Note overhang when in Lateral mode.



Lateral view/position  
for left foot (note: the  
patient is facing the  
opposite way)